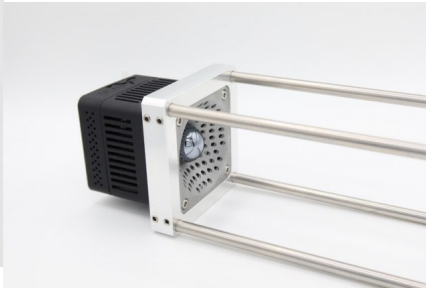


## TicCage-SA420G-60mm



The optional 60 mm cage mount kit attaches to the front of a TicSA-420G source.

Rating: Not Rated Yet

[Request a quote about this product](#)

### Description

The kit is designed to slide onto the rods of a Thorlabs 60 mm cage mount system, ensuring a secure and precise optical alignment of the TicSA-420G in an optical system.

### Reviews

There are yet no reviews for this product.

//